



Thermo products



# Artekno Oy

## – for the benefit of your product

Artekno Oy is a traditional and innovative manufacturer and importer serving the food, packaging and manufacturing industry as well as private consumers. We have 60 years of experience in offering effective solutions for the packaging and transport of products as well as for the production of complex industrial parts. We provide experienced service, which starts from the drawing board. The overall end result is always economically innovative and sustainable.

### Artekno thermo product is

- Light
- Durable
- High quality
- Certified
- Machine washable
- For food contact
- For hot, cold and frozen
- To temperatures -40°C – +120°C

### Experience

Our long experience ensures that we take into account all the details related to packaging, transporting, packaging handling and packaging use. Artekno's products are easy to open, close, carry, mark, store, stack and seal.

### Research and development (R&D)

Customer and end-user satisfaction is the base for our new product designs. Our experienced packaging designers work in close cooperation with you through the product development process. New product is created quickly, economically and is modifiable later on due to professional mould manufacturing, which ensures a long product life cycle.

### Material

We offer you two different cellular plastic materials: durable EPP and lightweight EPS.

### Quality and environment

In all our operation we at Artekno Oy consider the quality requirements of each customer, the welfare of the environment and are engaged in continuous improvement for the prevention of environmental pollution. Artekno has a certified quality and environmental management system.

### Total service

Our customers from various industries benefit from the long-term and reliable cooperation. We offer a ready-made Artekno product range presented in this brochure and the possibility to create a unique packaging for the benefit of your product.





### EPP Server Thermo

Server thermo consists of two parts: lower and upper. Combine these parts to make three boxes with different heights. Server transports and stores food cold or hot.

#### EPP Server lower part. Product number 12017

- External dimensions 325 x 230 x 60 mm
- Internal dimensions 280 x 186 x 37 mm

#### EPP Server upper part. Product number 12016

- External dimensions 325 x 230 x 80 mm
- Internal dimensions 280 x 186 x 57 mm



### EPP Thermo GN ¼ 15 litres plastic sling

#### Product number 12186

GN 1/4 thermo is small and handy. It's ideal for transporting and storing diet meals and small frozen food items. Different sample shipments can be easily and reliably delivered. Additional equipment: Lifting plate, Cold gel basket and Cold gel element.

- Colours: Green, blue, red and yellow
- External dimensions 337 x 266 x 325 mm
- Internal dimensions 276 x 216 x 268 mm
- Weight 0.6 kg



### EPP Thermo 16 litres GN ½ low

#### Product number 12079

#### EPP Thermo 16 litres GN ½ low with carrying/closing strap

#### Product number 12150

- External dimensions 400 x 320 x 245 mm
- Internal dimensions 345 x 265 x 165 mm
- Weight 0.8 kg



### EPP Thermo Handy 20 l GN1/2

#### Product number 12126

Handy thermo is designed for easy handling of GN-trays leaving plenty of space of hands when loading and unloading the thermo.

- External dimensions 450 x 330 x 300 mm
- Internal dimensions 345 x 265 x 214 mm
- Weight 0.9 kg



### EPP Thermo Bakery 22 l

#### Product number 12048

Bakery thermo is compatible and stackable with a 600 x 400 mm bakery box. One 1/1 GN-100 mm tray is designed to fit in the Bakery thermo. Grips for easy carrying.

- External dimensions 600 x 400 x 180 mm
- Internal dimensions 535 x 335 x 110 mm
- Weight 1.0 kg



### EPP Thermo GN ½ 25 litres plastic sling

#### Product number 12188

25 litre thermo is equipped with plastic carrying belt, a plastic marking label, locking and sealing ability. Additional equipment: Lifting plate, Cold gel basket and Cold gel elements.

- External dimensions 415 x 335 x 385 mm
- Internal dimensions 355 x 275 x 325 mm
- Weight 1.1 kg



### EPP Thermo GN ½ 25 litres with handles

#### Product number 12190

This thermo is equipped with plastic handles, a plastic marking label, locking and sealing ability. Additional equipment: Lifting plate, Cold gel basket and Cold gel elements.

- External dimensions 415 x 335 x 385 mm
- Internal dimensions 355 x 275 x 325 mm
- Weight 1.1 kg



### EPP Thermo Picnic 27 l plastic sling

#### Product number 12132

- External dimensions 425 x 280 x 420 mm
- Internal dimensions 365 x 224 x 365 mm
- Weight 1.0 kg





### EPP Thermo Handy 37 l GN 1/1

Product number 12129

Handy thermo is designed for easy carrying. Outside handles and inside grips enable easy handling of GN-trays.

- External dimensions 660 x 400 x 300 mm
- Internal dimensions 535 x 335 x 214 mm
- Weight 1.7 kg



### EPP Thermo 40 l GN1/1 with handles

Product number 12000

40 litre EPP thermo is excellently applicable for transporting and storing hot, cold and frozen foods. The thermo has space for three 65 mm high 1/1 GN-trays. It's equipped with sturdy metal carrying handles and closing strap. Additional equipment: Lifting plate, Layer lid and Cold gel element.

- External dimensions 600 x 400 x 300 mm
- Internal dimensions 535 x 335 x 230 mm
- Weight 2.2 kg



### EPP Thermo 47 l GN1/1 with handles

Product number 12075

40 litre EPP thermo is excellently applicable for transporting and storing hot, cold and frozen foods. The thermo has space for three 65 mm high 1/1 GN-trays. It's equipped with sturdy plastic carrying handles and closing strap. Additional equipment: Lifting plate, Layer lid and Cold gel element.

- External dimensions 600 x 400 x 330 mm
- Internal dimensions 535 x 335 x 260 mm
- Weight 2.1 kg



### Seulo Thermo 60 litres

Product number 12189

Seulo thermo is designed for food stuff transportation. Seulo can be divided into three different temperature departments with EPP-partitions, for frozen, refrigerator cold and room temperature products. The lid is removable, sealable and hinged. Seulo is equipped with a delivery note pockets and a plastic marking label.

- External dimensions 660 x 400 x 430 mm
- Internal dimensions 486 x 320 x 365 mm
- 2 pcs transferable EPP-partitions included
- Weight 2.5 kg



### EPP Thermo 65 l with handles

Product number 12004

65 litre thermo is designed for multiple use for industry, tour service entrepreneurs as well as for frozen and hot food transport. The thermo volume is sufficient for transporting a milk basket. Due to thick wall thickness it has excellent thermo properties. The thermo is equipped with metal handles, closing strap, delivery note pocket and plastic marking label.

- External dimensions 600 x 500 x 400 mm
- Internal dimensions 500 x 400 x 320 mm
- Weight 3.6 kg



### EPP Thermo Front Loader 70 l GN1/1

Product number 12098

Front Loader is a stackable front loaded thermo with a lockable hinged door. It is ideal for GN-trays (1/1, 1/2, 1/3) ready for serving. Front loader is equipped with grips and metal handles. Additional equipment: Cold gel basket, Cold gel elements, Heat plate, Hot pack 220V, cordless Hot pack or Cool pack.

- External dimensions 635 x 410 x 550 mm
- Internal dimensions 530 x 325 x 448 mm
- Weight 4.5 kg



### EPP Thermo 100 l with handles

Product number 12058

100 litre thermo can be divided into two different temperature departments with EPP-partition, for frozen and refrigerator cold products. It's equipped with one EPP-partition, sturdy metal handles and a closing strap.

- External dimensions 990 x 450 x 410 mm
- Internal dimensions 890 x 355 x 330 mm
- Weight 4.6 kg



### EPP Thermo 102 l with handles

Product number 12060

102 litre thermo can accommodate 600 x 400 boxes, such as fruit and vegetable, fish or meat boxes. It's equipped with a delivery note (A5) compartment, a plastic marking plate, metal handles and closing strap. Additional equipment: Cold gel basket and Cold gel elements.

- External dimensions 700 x 500 x 480 mm
- Internal dimensions 620 x 420 x 395 mm
- Weight 4.0 kg





### EPP Trolley Box 242 I without handles

Product number 12078

If there is a need to transport refrigerated goods in a normal distribution car a Trolley Box 242 litres is an ideal option. Trolley Box fits inside a commercial use trolley (800 x 400 mm), up to 2 stackable cabinets on top of each other. It's easy to keep clean because it is completely washable.

Trolley Box has a 2-piece hinged and lockable door that opens 270 degrees. It makes it easy to load and unload. Trolley box is equipped with rails (7 pcs) for GN 2/1 trays or Cold gel baskets. Additional equipment: Cold gel basket and Cold gel elements.

- External dimensions 800 x 620 x 850 mm
- Internal dimensions 650 x 510 x 730 mm
- Weight 16.0 kg



### Thermopallet

Thermopallet is ideal for transporting temperature-sensitive goods which require the maintenance of a constant temperature. The suitable shipping platform is a euro-pallet. Thermopallet consists of bottom and top parts (1200 x 800 mm) and frames. The height can be added by 200 mm intervals (1 frame). Thermopallet in the photo consists of four frames.

The frames have compact, sturdy and easy to use tongues. Frame structure is strengthened with the supplied, open-able corner clamps (stainless). Unloading is fast and easy – remove lid, open tongues and the entire long side can be lifted off at once.

Thermopallet can be dismantled and retuned requiring a lot less space.

Wall thickness is 60 mm. Additional equipment: Cold gel basket and Cold gel elements.

**Bottom part** Product number 12106

– 1200 x 800 x 60 mm

**Top part** Product number 12107

– 1200 x 800 x 60 mm

**Frame** Product number 12108

– 1200 x 800 x 200 mm (height)





### Styropak Transportation Thermos Thermo 3.8 litres

Product number 10048

- External dimensions 270 x 125 x 285 mm
- Internal dimensions 270 x 125 x 258 mm
- Weight 0.14kg

### Thermo 5.6 litres

Product number 10045

- External dimensions 262 x 232 x 196 mm
- Internal dimensions 218 x 188 x 154 mm
- Weight 0.2 kg

### Thermo 11.0 litres

Product number 10026

- External dimensions 320 x 252 x 240 mm
- Internal dimensions 267 x 197 x 199 mm
- Weight 0.26 kg



### Styropak Thermo 25 l

Product number 10167

- External dimension 400 x 320 x 342 mm
- Internal dimensions 348 x 268 x 280 mm
- Weight 0.48 kg



### Styropak Thermo 30 l

Product number 10180

- External dimension 400 x 320 x 400 mm
- Internal dimensions 348 x 268 x 345 mm
- Weight 0.50 kg



### Styropak Combo Thermo 30 l + Styropak Thermo 11 l

Product number 10181

- Popular thermos pre-packed inside each other.
- External dimensions 400 x 320 x 400 mm



### Styropak

Styropak is an affordable EPS shipping container for transporting and storing frozen food, ice and cold food. Styropak is fitted with metal support handles, durable in use.

### Styropak 60 litres. Product number 10003

- External dimensions 600 x 400 x 500 mm
- Internal dimensions 500 x 300 x 400 mm
- Wall thickness 50 mm
- Weight 1.6 kg

### Styropak 115 litres. Product number 10005

- External dimensions 790 x 590 x 590 mm
- Internal dimensions 620 x 420 x 430 mm
- Wall thickness 80 mm
- Weight 4.5 kg



### Styropak 140 litres. Product number 10007

- External dimensions 790 x 590 x 690 mm
- Internal dimensions 620 x 420 x 530 mm
- Wall thickness 80 mm
- Weight 6.0 kg

### Styropak EPS boxes

#### Styropak lid Product number 10054

#### Styropak base Product number 10055

Styropak product family consists of a lid and a base part. Styropak can be combined into three different sizes.

#### 11.5 litres

- Two lid parts
- Ext. dimensions 445 x 300 x 165 mm
- Int. dimensions 395 x 250 x 120 mm
- Weight 0.24 kg
- Wall thickness 25 mm

#### 20.5 litres

- Lid and base
- Ext. dimensions 445 x 300 x 225 mm
- Int. dimensions 395 x 250 x 209 mm
- Weight 0.32 kg
- Wall thickness 25 mm

#### 29.5 litres

- Two base parts
- Ext. dimensions 455 x 300 x 345 mm
- Int. dimensions 395 x 250 x 298 mm
- Weight 0.40 kg
- Wall thickness 25 mm



### Styropak posting boxes

Styropak posting boxes consist of low and high part. Styropak can be combined into three different sizes.

#### Low part Product number 11346

#### High part Product number 11347

#### 1.85 litres

- Two low parts
- External dimensions 300 x 208 x 110 mm
- Internal dimensions 205 x 150 x 50 mm
- Weight 0.12 kg

#### 2.8 litres

- Low and high part
- External dimensions 300 x 208 x 110 mm
- Internal dimensions 205 x 150 x 77 mm
- Weight 0.13 kg

#### 3.70 litres

- Two high parts
- External dimensions 300 x 208 x 160 mm
- Internal dimensions 205 x 150 x 104 mm
- Weight 0.14 kg





### Styropak Shipping Thermo

In Styropak Shipping Thermo products travel dry and good quality all the way to the end-user.

#### Wall thickness 12 mm

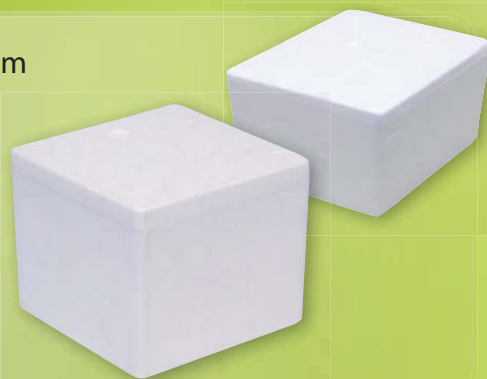
Product number 11267

- External dimensions 237 x 190 x 120 mm
- Internal dimensions 200 x 154 x 77 mm
- Volume 3.0 litres
- Weight 0.05 kg

#### Wall thickness 15 mm

Product number 10112

- External dimensions 163 x 163 x 132 mm
- Internal dimensions 128 x 128 x 100 mm
- Volume 1.5 litres
- Weight 0.05 kg



#### Wall thickness 28 mm

Low part Product number 11606

High part Product number 11607

#### 4,9 litres

- External dimensions 508 x 240 x 138 mm
- Internal dimensions 447 x 177 x 63 mm
- Weight 0.24 kg
- Two low parts

#### 6,4 litres

- External dimensions 508 x 240 x 155 mm
- Internal dimensions 447 x 177 x 82 mm
- Weight 0.27 kg
- Low and high part

#### 8,3 litres

- External dimensions 508 x 240 x 172 mm
- Internal dimensions 447 x 177 x 99 mm
- Weight 0.30 kg
- Two high parts



Low part Product number 11608

- External dimensions 240 x 240 x 75 mm

High part Product number 11609

- External dimensions 240 x 240 x 92 mm



### Styropak Small Cube Product number 10176

- External dimensions 350 x 250 x 470 mm
- Internal dimensions 150 x 150 x 176 mm
- Volume 3.9 litres
- Weight 0.22 kg

### Styropak Large Cube Product number 11771

- External dimensions 325 x 325 x 355 mm
- Internal dimensions 225 x 225 x 247 mm
- Volume 12.0 litres
- Weight 0.62 kg



### Styropak 3-ampoule box Product number 10019

- Ø 16, External dimensions 145 x 195 x 32 mm

### Styropak 40-ampoule box Product number 10023

- Ø 16, External dimensions 190 x 125 x 130 mm



### EPS Fishing Thermo

Product number 10078

- Dimensions 280 x 190 x 410 mm
- Good sitting height
- Plastic sling
- Plastic bottom



### EPP Fishing Thermo with fabric sling

Product number 12092

- external dimensions 350 x 250 x 470 mm
- internal dimensions 290 x 175 x 385 mm
- weight 1.25 kg
- volume 19 litres
- max load 350 kg
- fabric sling, removable fish lid, partition wall, hinged lid and bait jars



### EPP Fishing Backpack Thermo

Product number 12093

- external dimensions 350 x 250 x 470 mm
- internal dimensions 290 x 175 x 385 mm
- weight 1.25 kg
- volume 19 litres
- padded shoulder straps, removable fish lid, partition wall, hinged lid and bait jars



### EPP Cake cover Maxi

Product number 12095

Cake cover Maxi is ideal for catering services for the transport and serving of layer cakes, pies, pizzas and other treats.

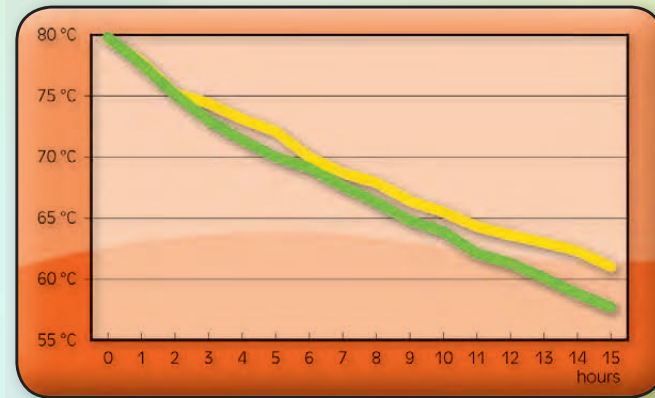
- Plate Ø 40 cm
- Internal/external diameter Ø 360/400 mm
- Internal/external height 140/190 mm





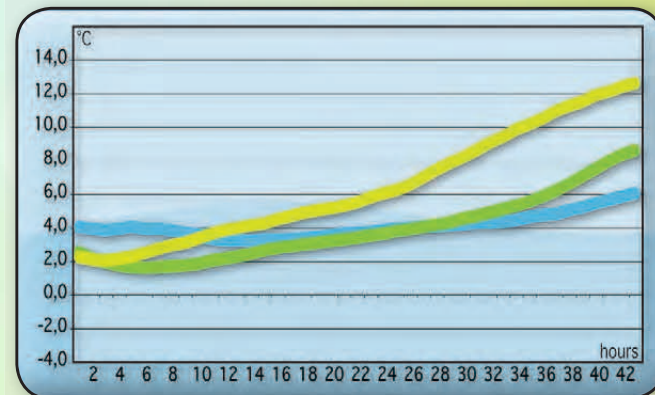
## Cold storage time

Artekno Thermo maintains your products in a correct temperature: hot products hot or cold products cold. Additional equipment eases your work and with cold gel elements you significantly increase the cold storage time and transport certainty for perishable foods.



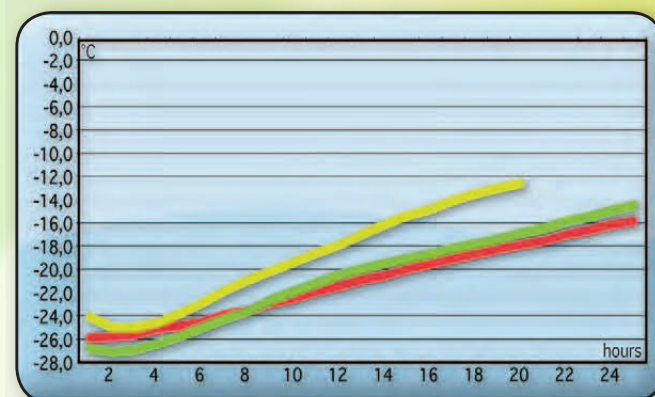
### Hot

- Heath test, water mass 22.8 kg (40 l thermo)
- Heath test, water mass 16.7 kg (20 l thermo)
- Starting temperature +80°C,
- test condition +20°C



### Cold

- 60 l thermo
- 40 l thermo
- 25 l thermo
- regular room temperature
- test material yoghurt, filling degree 60 %
- additional source of cold Artekno
- Cold gel element -1°C



### Frozen

- 60 l thermo
- 40 l thermo
- 25 l thermo
- regular room temperature
- test material ice cream, filling degree 60 %
- additional source of cold Artekno
- Cold gel element -23°C

By using Artekno Cold gel elements the cold storage time can be significantly increased. Cold gel is more efficient than crushed ice and releases cold in thermos longer and more evenly than traditional "Cold Charlies". Use of Cold gel elements is clean and simple. Cold gel element is loaded in a freezer for 10–20 hours after which it's ready for use. Cold gel element can be loaded in freezer again and again.

### Cold gel element retail

Product number 15082

- 1°C blue
- 0.7 kg



### Cold gel element for 15 l thermo

Product number 15016

- 1°C, 1/4 GN

### Cold gel element for 15 l thermo

Product number 15017

- 23°C, 1/4 GN



### Cold gel element for 25 l thermo

Product number 15000

- 1°C, 1/2 GN

### Cold gel element for 25 l thermo

Product number 15001

- 23°C, 1/2 GN



### Cold gel element for 40 l thermo

Product number 15002

- 1°C, 1/1 GN

### Cold gel element for 40 l thermo

Product number 15003

- 23°C, 1/1 GN



### Cold gel element for 65/102 l thermo

Product number 15004

- 1°C, 500x400

### Cold gel element for 65/102 l thermo

Product number 15005

- 23°C, 500x400





**Cold gel basket for 15 l Thermo 1/4 GN**

Product number 12192



**Cold gel basket for 25 l Thermo 1/2 GN**

Product number 12193



**Layer lid for thermo 40 l GN1/1**

Product number 12023



**Layer lid for 65 l EPP Thermo**

Product number 12024



**Cold gel basket for EPP Thermo Front Loader 70 l**

Product number 12168



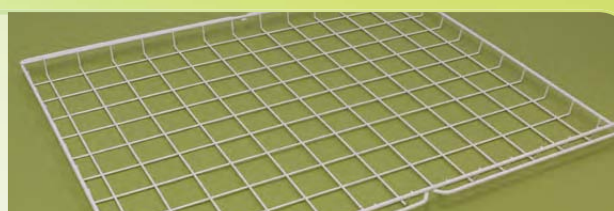
**Cold gel basket for EPP Thermo 102 l**

Product number 12172



**Cold gel basket for EPP Trolley Box 242 l**

Product number 12084



**Cold gel basket for Thermopallet**

Tuotenumero 12169

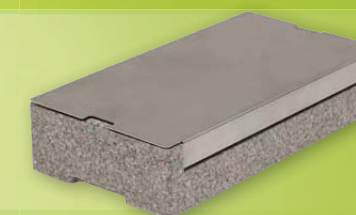


Cold Plate assures cool serving temperature for cold foods. It gives extra cold in buffet services, restaurants, schools, hotels and events. Use and maintenance is easy; just place a frozen Cold gel element inside the Cold Plate and the Cold Plate is ready for use. Cold Plate can be machine washed.

**Cold Plate for cream and milk**

Product number 12183

- Dimensions 330 x 172 x 68 mm
- Stainless steel lid



**Cold Plate GN 1/2 GN with Cold gel element -23°C**

Product number 12135

- Dimensions 400 x 300 x 80 mm
- Stainless steel lid



**Cold Plate GN 1/1 GN with Cold gel element -23°C**

Product number 12105

- Dimensions 600 x 400 x 80 mm
- Stainless steel lid



**Cool Pack -3°C, GN 1/1**

Product number 12178

- Dimensions 520 x 320 x 30 mm
- -3 °C
- white



Lifting plate helps lifting GN-trays from a thermo. It comes in three sizes.

**Lifting plate for thermo 15 l GN1/4**

Product number 12047

- Dimensions 255 x 200 x 30 mm



**Lifting plate for thermo 25 l GN1/2**

Product number 12046

- Dimensions 330 x 260 x 30 mm



**Lifting plate for thermo 40 l GN1/1**

Product number 12010

- Dimensions 520 x 320 x 30 mm





### Hot plate 1/2 GN 230 V–150 W

Product number 12147

- Dimensions 350 x 240 x 30 mm



### Hot plate 1/1 GN 230 V–280 W

Product number 12099

- Dimensions 505 x 330 x 30 mm



### Hot pack 1/1 GN

Product number 12173

- Dimensions 530 x 330 x 30 mm
- max 85°C
- cordless



### Pizza warm bag 40 cm

Product number 12179

- Dimensions 400 x 400 x 250 mm
- 12 V. In-car Adapter

### Pizza warm bag 45 cm

Product number 12180

- Dimensions 450 x 450 x 250 mm
- 12 V. In-car Adapter



### Dolly Mini Move

Product number 12184

- Dimensions 625 x 420 mm
- Height 165 mm



### Cart 650 x 400 Stainless Steel

Product number 12148

- Dimensions 650 x 400 mm
- Height 175 mm
- Removable handle



### ElcoLog thermometer

Small and compact thermo-button saves temperature data with time stamps on its own almost anywhere.

ElcoLog programme allows you to monitor the continuity of the cold chain efficiently and reasonably. The ElcoLog system consists of thermo-button, logger and Finnish-language easy-to-use ElcoLog software.

Technical specifications:

- Thermo-button diameter 17.4 mm
- Weight 3.3 g
- Protection class IP68
- Operating time 10 years or one million samples
- Max 2048 samples in one programming
- Storage temperature -40°C – +85°C
- Can be reprogrammed







Artekno Oy  
Aakkulantie 46, 36220 Kangasala, Finland  
Tel: +358 3 244 7600  
[info@artekno.fi](mailto:info@artekno.fi) • [www.artekno.fi](http://www.artekno.fi)